

# Exercise CRIMSON DAWN 2025-1

## Townsville Field Training Area, QLD

### SUBMITTED BY

Royal Australian Air Force – Joint Airspace Control Cell

### CONSULTATION SUMMARY

JACC requests feedback on proposed temporary restricted area (TRA) and procedures for Exercise CRIMSON DAWN 2025-1, specifically to be employed at Townsville Field Training Area.

### KEY ISSUES

This proposal notes the following key issues:

- Activation of proposed TRA ‘MESA’ and TRA ‘VERDE’ to extend R737 on a temporary basis prior to a proposed [permanent restricted area amendment](#).
- To support aircraft operating to Kidston (YKID), changes to the prior proposal include joining proposed R737G and R737J and establishing the base of restricted airspace at FL120 vice FL120 and 7000 feet
- No additional air routes are affected beyond those already affected by R737 activation.
- Airspace is designed to remain clear of air routes W387.
- Conditional status of TRA will be RA2.

### FEEDBACK TO

Joint Airspace Control Cell - [adf.airspace@defence.gov.au](mailto:adf.airspace@defence.gov.au)

### CLOSE DATE

25 Mar 2025

### OVERVIEW

Elements of the Royal Australian Air Force (RAAF) will be conducting Exercise ‘CRIMSON DAWN 2025-1’ over the month of June 2025.

Two Temporary Restricted Areas (TRA) are proposed to safely separate civil aircraft from fast jet activities over the period 16-27 June 25.

### PROPOSAL

#### Townsville Field Training Area

Two TRAs are proposed to support fast jet operations out of RAAF Townsville, QLD. Indicative timings are listed in Table 1, with specific activation timings to be promulgated by AIP Supp and

NOTAM.

<b>Airspace</b>	<b>Date</b>	<b>Time</b>
<b>TRA 'MESA'</b>	15 – 27 June 25	2345Z – 0630Z Daily
<b>TRA 'VERDE'</b>	15 – 27 June 25	2345Z – 0630Z Daily

**Table 1. Planned activation timings for TRA 'MESA' and TRA 'VERDE'**

**Diversion Routes**

Extant diversion routes for R737 (outlined in En Route Supplement Australia (ERSA) are not affected by TRA 'MESA' or TRA 'VERDE'.

**Access to TRA 'MESA' and TRA 'VERDE'**

During NOTAM activation periods, access to TRA 'MESA' and TRA 'VERDE' by non-exercise aircraft will not be available except in cases of a declared emergency, radio failure or participating in activities for the preservation of life and property (SAR, MED, POL or FFR).

**YBBB/TRA 'MESA'**

**Conditional Status:** RA2

**Military Flying**

**Lateral Limits:** 182500S 1440000E - 181416S 1445605E - then along the counter clockwise arc of a radius 120.00NM centre 191439S 1464530E (TL/DME) - 184958S 1444131E - 191000S 1440000E - 182500S 1440000E

**Vertical Limits:** FL120 - NOTAM

**Hours of Activity:** 2345Z – 0630Z Daily

**Controlling Authority:** 452SQN Townsville Flight Commander

**YBBB/TRA 'VERDE'**

**Conditional Status:** RA2

**Military Flying**

**Lateral Limits:** 184958S 1444131E then along the counter clockwise arc of a radius 120.00NM centre 191439S 1464530E (TL/DME) 201158S 1445336E - 201657S 1442650E - 191000S 1440000E - 184958S 1444131E

**Vertical Limits:** 7000 AMSL – NOTAM

**Hours of Activity:** 2345Z – 0630Z Daily

**Controlling Authority:** 452SQN Townsville Flight Commander

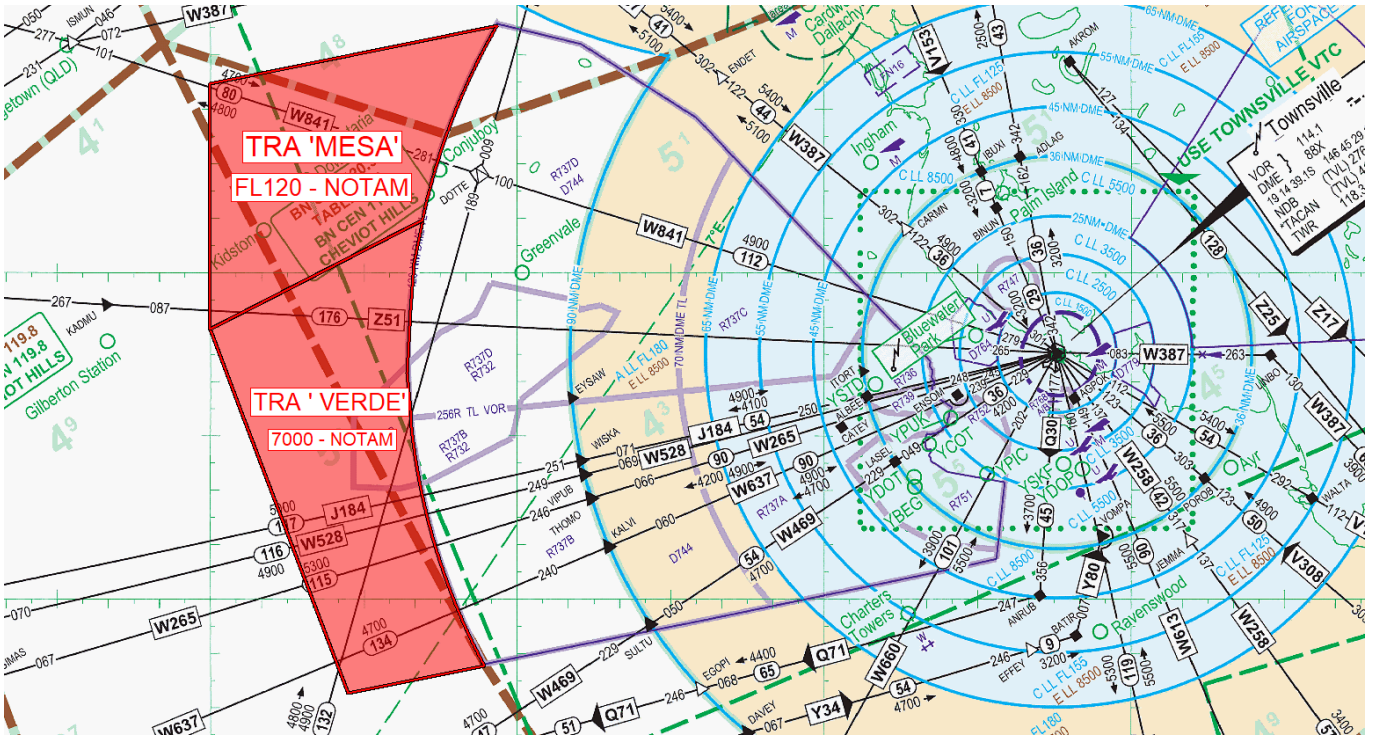


Figure 1. TRA 'MESA' and TRA 'VERDE'

AvSEF members are invited to provide feedback to JACC: [adf.airspace@defence.gov.au](mailto:adf.airspace@defence.gov.au) by 25 Mar 2025.