

Currently:

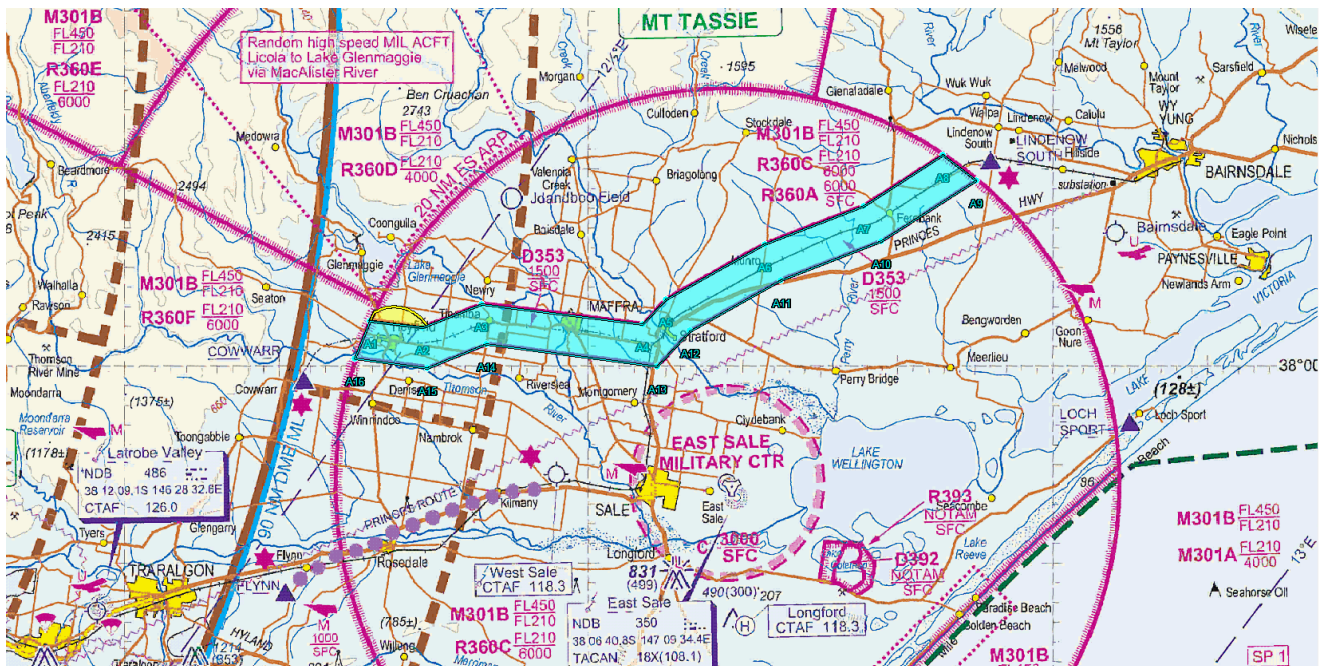
DAH (Currently States)

YMMM/D353 EAST SALE
VFR TRANSIT LANE
LATERAL LIMITS: 375740S 1464556E - 375800S 1464920E
375649S 1465309E - 375751S 1470333E
375635S 1470503E - 375347S 1471126E
375150S 1471751E - 374915S 1472258E
then along the clockwise arc of a circle radius 20.00NM centre
380556S 1470858E (YMES/AD) - 375032S 1472507E
375338S 1471900E - 375536S 1471230E
375811S 1470637E - 375958S 1470431E
375852S 1465328E - 380003S 1464940E
375935S 1464458E
then along the clockwise arc of a circle radius 20.00NM centre
380556S 1470858E (YMES/AD) - 375740S 1464556E
VERTICAL LIMITS: SFC - 1500
HOURS OF ACTIVITY: JO HJ or as amended by NOTAM
CONTACT: FLTCDR 453SQN EAST SALE

[This extrapolates out to the following:](#)

YMMM/D353 EAST SALE
VFR TRANSIT LANE
LATERAL LIMITS:
375740S 1464556E
375800S 1464920E
375649S 1465309E
375751S 1470333E
375635S 1470503E
375347S 1471126E
375150S 1471751E
374915S 1472258E
then along the clockwise arc of a circle radius 20.00NM centre 380556S 1470858E (YMES/AD)
375032S 1472507E
375338S 1471900E
375536S 1471230E
375811S 1470637E
375958S 1470431E
375852S 1465328E
380003S 1464940E
375935S 1464458E
then along the clockwise arc of a circle radius 20.00NM centre 380556S 1470858E (YMES/AD)
375740S 1464556E
VERTICAL LIMITS: SFC - 1500
HOURS OF ACTIVITY: JO HJ or as amended by NOTAM
CONTACT: FLTCDR 453SQN EAST SALE

Pictorially looks like this (Heyfield Release YELLOW)



Proposal

ERSA (Proposal)

ERSA - MILITARY AIRSPACE ACCESS PROCEDURES – CLEARANCES - VFR ACFT

- i. When R360/M301 is active ACFT are to contact ACD on 133.6 MHz 10NM prior to the boundary for AWY clearance. Clearance is not required for transit through R360A via D353.
- ii. D353 (VFR Transit Lane). Lateral limits approximately 1NM either side of the RAILWAY line Cowsarr - Heyfield - Maffra - Stratford - Lindenow South. Vertical limit SFC-1,500FT AMSL. Active in accordance with DAH. No air traffic services provided. Keep right of the railway/disused railway line. ACFT must monitor 126.7 MHz and broadcast at COWWARR and LINDENOW SOUTH compulsory en route reporting points. Aircraft operating to/from the Department of Environment, Land, Water and Planning (DELWP) base at Heyfield are within contained with D353 when operating north of Heyfield and south of the Tinamba-Glenmaggie Rd.

DAH (Proposal)

YMMM/**D###** EAST SALE

VFR TRANSIT LANE

LATERAL LIMITS:

375600S 1464700E

375751S 1470333E

375635S 1470503E

375347S 1471126E

375150S 1471751E

374915S 1472258E

then along the clockwise arc of a circle radius 20.00NM centre 380556S 1470858E (YMES/AD)

375032S 1472507E

375338S 1471900E

375536S 1471230E

375811S 1470637E

375958S 1470431E

375852S 1465328E

380003S 1464940E

375935S 1464458E

then along the clockwise arc of a circle radius 20.00NM centre 380556S 1470858E (YMES/AD)

375600S 1464700E

VERTICAL LIMITS: SFC - 1500

HOURS OF ACTIVITY: JO HJ or as amended by NOTAM

CONTACT: FLTCDR 453SQN EAST SALE

Extrapolates To:

YMMM/D353 EAST SALE

VFR TRANSIT LANE

LATERAL LIMITS:

375600S 1464700E - 375751S 1470333E

375635S 1470503E - 375347S 1471126E

375150S 1471751E - 374915S 1472258E

then along the clockwise arc of a circle radius 20.00NM centre

380556S 1470858E (YMES/AD) - 375032S 1472507E

375338S 1471900E - 375536S 1471230E

375811S 1470637E - 375958S 1470431E

375852S 1465328E - 380003S 1464940E

375935S 1464458E

then along the clockwise arc of a circle radius 20.00NM centre

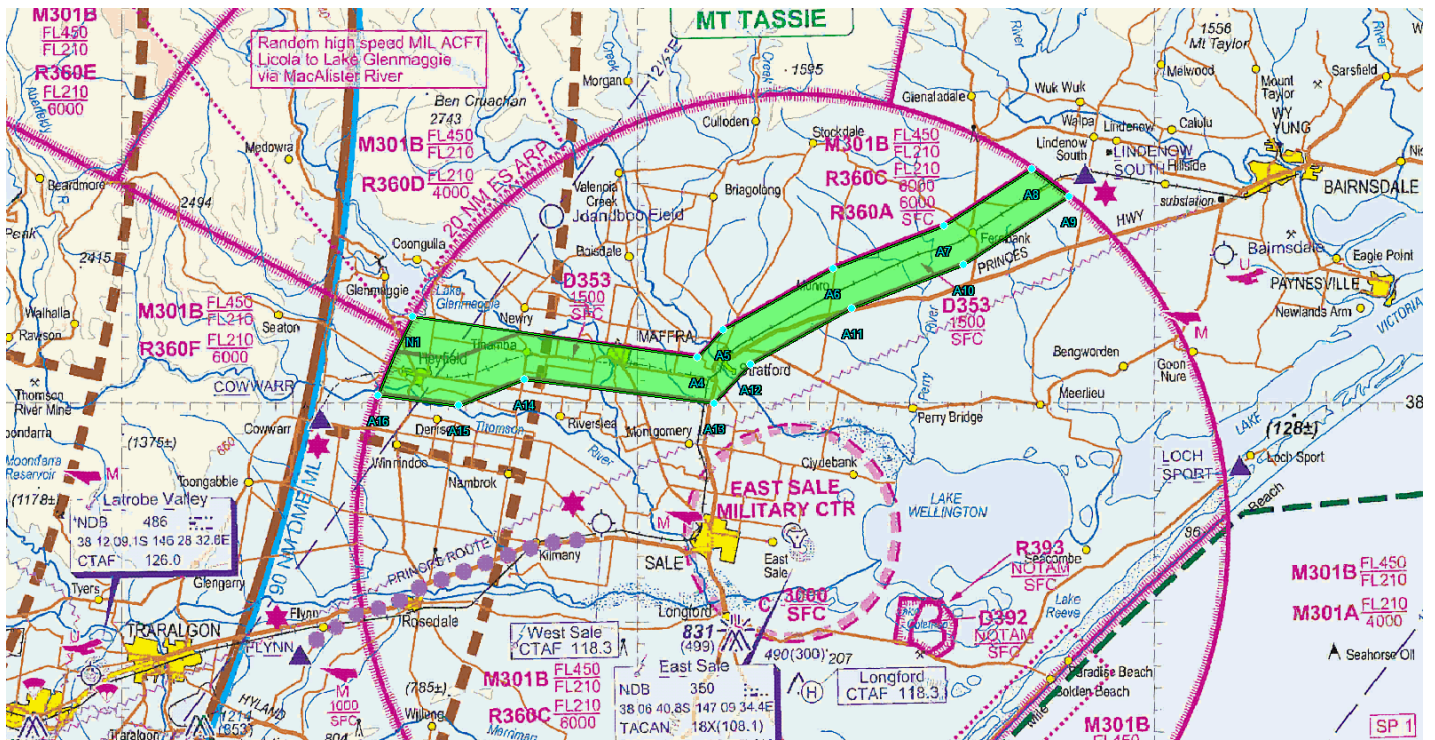
380556S 1470858E (YMES/AD) - 375600S 1464700E

VERTICAL LIMITS: SFC - 1500

HOURS OF ACTIVITY: JO HJ or as amended by NOTAM

CONTACT: FLTCDR 453SQN EAST SALE

Pictorially (GREEN) looks like this:



Pictorially Heyfield release now encompassed in D353

